

FORTE 70-Textile collection



Forte 70-2646

NB: The portrayed colours may differ from reality.



Specification

Name	Forte		
Width approx.	137 cm - 54"		
Weight approx.	gr / lm	:	480
	oz / lnyd	:	15.5
Thickness	approx. 0.77 mm		
Composition	linen	:	91%
	hemp	:	9%
Weaving technique	dobby woven		
Dyeing	piece dyed		
Backing	reinforced woodpulp	:	70%
	recycled polyester	:	30%
Repeat approx.	height	:	-
	width	:	-
Hanging	random		

Scan QR-code
 for more details,
 visuals and
 video content.



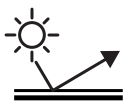
Performance	Please contact info@tapetex.com for more detailed test reports.
Surface finish	A stain repellent finish prevents waterbased splashes penetrating and staining the material. Periodic vacuuming is recommended to prevent dust from building up on the materials surface.
Lightfastness	Test result as per ISO 105-B02:2014, Heraeus original Hanau Xenotest.
LRV values	Testing as per BS 8493:2008+A1:2010, Datacolor DC500.
Fire rating	ASTM E84 Class 1 or A and EUROCLASS (B s2 d0).
Permeability rating	Test result 46 as per ASTM E96-12, Method B, Water Vapor Transmission.
Indoor air quality	ASTM D6196 and D5197, Environmental Chamber Test. The testing followed UL 2821 "Greenguard Certification Program Method for Measuring and Evaluating Chemical Emissions".
REACH SVHC	Compliant as per Centexbel testing.



Treated with a stain repellent finish



Lightfastness: as per ISO 105-B02:2014 Xenotest



Light reflection: as per BS 8493:2008+A1:2010 Datacolor DC500



Fire resistant: EU: B, s2-d0 US: ASTM E84 Class 1 or A



Permeability rating: 46, as per ASTM E96-12 Method B



Indoor air quality: ASTM D6196 and D5197



Sustainability

All materials in this collection come from either 100% renewable natural sources or recycled fibers, ensuring a sustainable approach. The backing is FSC certified, FSC A000531.

In production, all energy sources are either green, wind or hydro based and all processes are waterbased. The products do not contain PVC, chlorine, plasticizers, heavy metals or harmful dyes.

Supply and packing

Delivery from stock by the full linear meter or full linear yard. The average piece length of this quality is approx. 50 linear meter or 55 linear yards. However, as is common within the textile industry, it is not possible to establish a standard roll length. The wallcovering is reeled on to a cardboard core, wrapped in polyethylene and protective end caps are fixed. Each roll is then packed in individual cardboard boxes or tubes, which are also made out of FSC certified woodpulp.

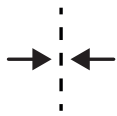
Harmonized System as per the World Customs Organization and Origin

Textile Wallcovering, paper backed: 5905.00. Made in the Netherlands.

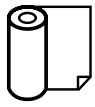


Hanging details

- Hanging** Random.
 Precision trimmed for butt-joining by professional paper hangers. Installation advice supplied with every roll.
 Use rubber roller instead of spatula.
- Adhesive** Use a premixed heavy duty, clear vinyl adhesive, suitable for textile wallcovering.
- Variation** There can be a variation between sample material and finished product.
 Stock cuttings are available for approval.



Precision trimmed



Sold by the meter/yard



Use a rubber roller

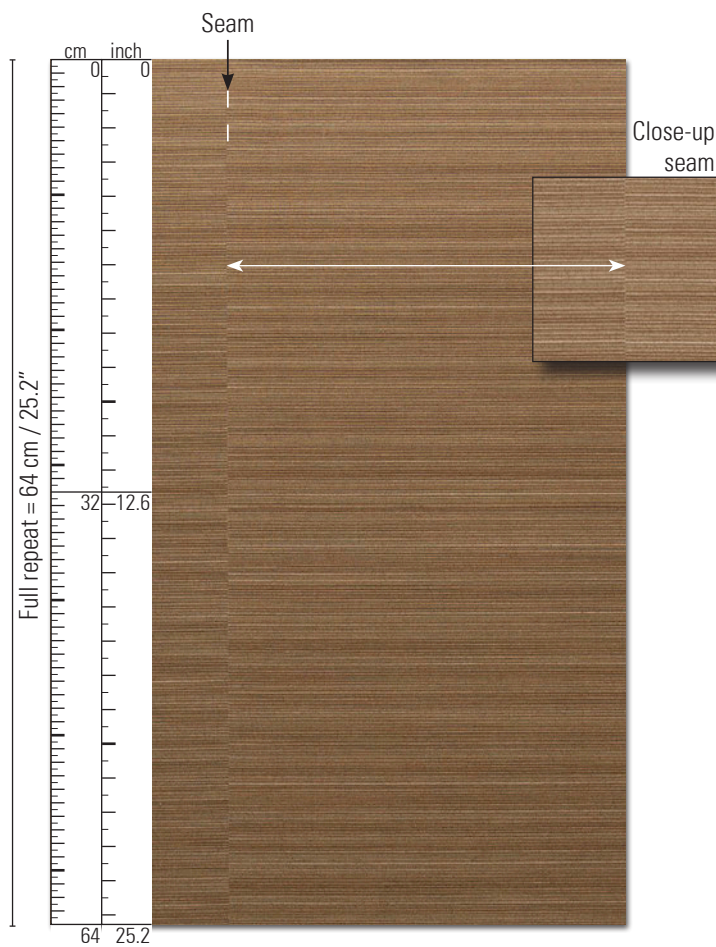


Do not use a spatula



Apply adhesive on the wall

View



"Powerful"

Crafted to evoke a powerful mood, Forte blends the raw beauty of natural elements with a heavy texture that commands attention. Its grass weave-like surface, rich in texture and earthy tones, offers not only visual allure but also warmth and authenticity.

The horizontal lines flow like pulsing veins, echoing the rhythm of thunder - an unstoppable symphony of strength and presence.



Forte 70-2645