

SPECIFICATION : **RINGOLIN 68-2100/-2104**
Collection : 5 colours from Tapetex 68-Linen

Physical properties

Surface Composition : 100% Linen, flat woven and piece dyed.
Backing : Paper backing of 70% woodpulp reinforced with 30% polyester.
Width : 137 cm = 54"
Weight : Approx. 410 gr/lm = 13.2 oz/lyd
Thickness : Approx. 0.60 mm
Hanging : On repeat 5.2 cm (2") x 5.2 cm (2") wide.
Precision trimmed for butt-joining by professional paper hangers.
Installation advice supplied with every roll.
Use a rubber roller instead of a spatula.
Adhesive : Adhesive Tapetex PRO-1 or similar premixed heavy duty, clear vinyl adhesive, suitable for textile wallcovering.
Variation : There can be a variation between sample material and finished product.
Stock cuttings are available for approval.

Performance : See detailed results on our website.

Surface finish : A stain repellent finish prevents waterbased splashes penetrating and staining the material.
Periodic vacuuming is recommended to prevent dust from building up on the materials surface.
Lightfastness : Test result as per ISO 105-B02:2014, Heraeus original Hanau Xenotest.
LRV values : Testing as per BS 8493:2008+A1:2010, Datacolor DC500.
Fire rating : ASTM E84 Class 1 or A and EUROCLASS (B s1 d0).
Permeability rating : Test result 55.3 as per ASTM E96-12, Method B, Water Vapor Transmission.
Indoor air quality : ASTM D6196, D5197 and D5116, Environmental Chamber Test.
The testing followed UL 2821 "Greenguard Certification Program Method for Measuring and Evaluating Chemical Emissions".
REACH SVHC : Compliant as per Centexbel testing.
DoP No. : (CPR 305/2011), DOP-CPR-01

Sustainability

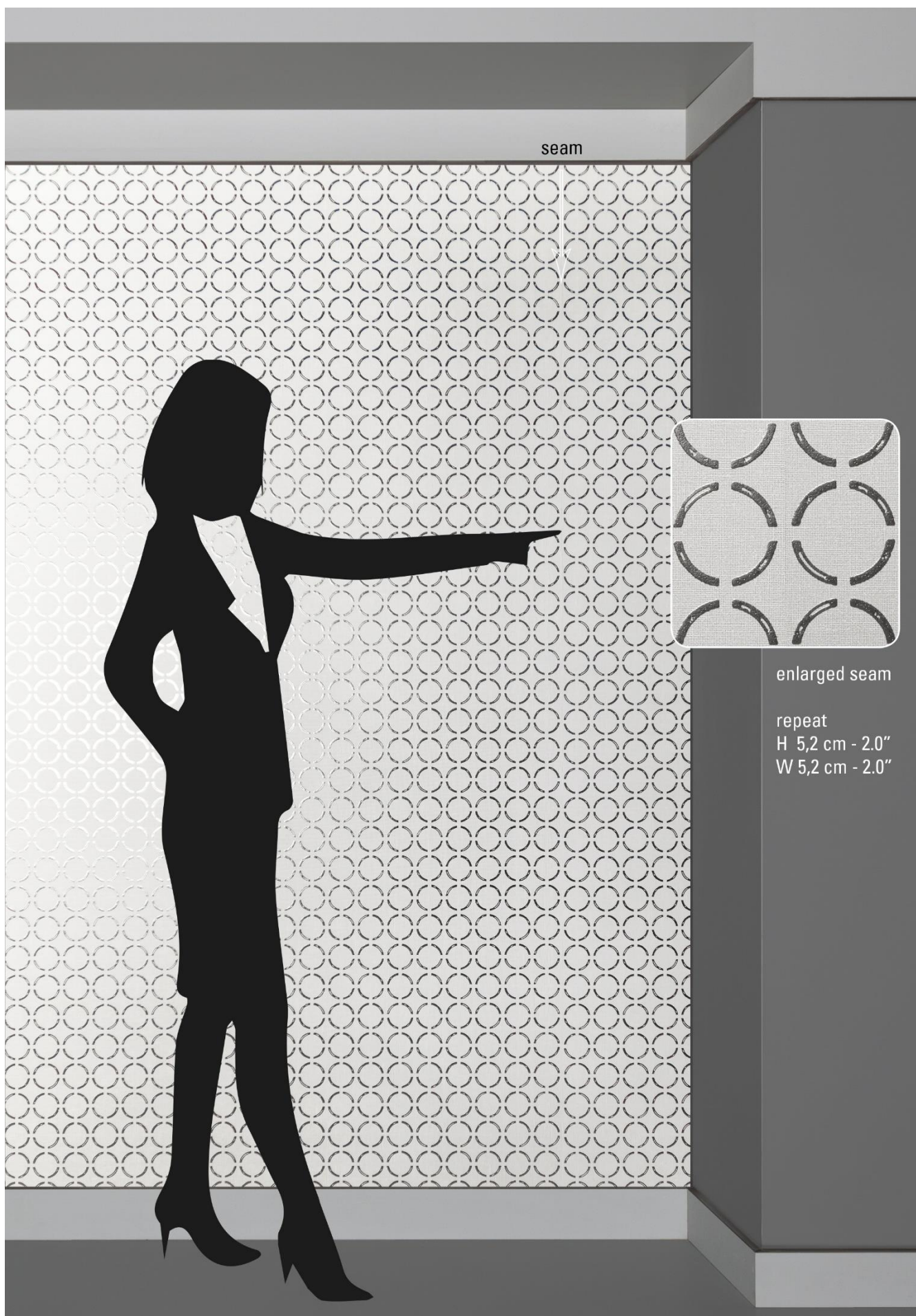
Linen is made from a plant, a 100% renewable natural resource.
The backing is FSC certified, FSC A000531.
In production, all energy sources are either green, wind or hydro based and all processes are waterbased. The products do not contain PVC, chlorine, plasticizers, heavy metals or harmful dyes.

Supply and packing

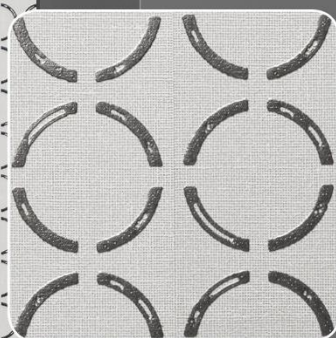
Delivery from stock by the full linear meter or full linear yard. The average piece length of this quality is approx. 50 linear meter or 55 linear yards. However, as is common within the textile industry, it is not possible to establish a standard roll length. The wallcovering is reeled on to a cardboard core, wrapped in polyethylene and protective end caps are fixed. Each roll is then packed in individual cardboard boxes or tubes, which are also made out of FSC certified woodpulp.

Harmonized System as per the World Customs Organization and Origin

Textile Wallcovering, paper backed: 5905.00. Made in the Netherlands.



seam



enlarged seam

repeat
H 5,2 cm - 2.0"
W 5,2 cm - 2.0"

tapetex bv
Churchillaan 10, 5705 BK Helmond, The Netherlands
(+31) 492 534690, info@tapetex.com, tapetex.com

tapetex wall materials

